

SLICER/APPLICATOR

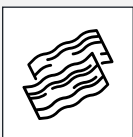
PRECISELY SLICE & APPLY A VARIETY OF FOOD PRODUCTS ONTO YOUR PROCESSING LINE



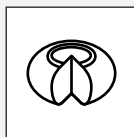
The Slicer/Applicator slices and applies a wide range of products directly onto your processing lines with precise targeting. It tailors to your operation with its cantilevered design, adjustable functions, and available multiple heads, lane configurations and left- or right-hand frame. Its user-friendly operation and sanitation allow for fast set-up, function selection and thorough cleaning. Its versatility and high quality slicing make it an essential piece for your operation.

- Slice and apply or bulk slice up to 150 strokes per minute, per lane; stack and shingle up to 120 strokes per minute, per lane
- Cantilevered design allows you to set directly over your production line and customize height and frame orientation to tailor exactly to your specific operation. Heavy duty casters make it simple to move.
- Easy-to-use touch screen controls to adjust speed, modes and slice thickness, spacing, arrangement and counts
- Continuous product loading reduces downtime and increases output
- Sanitary design with easily removable parts allows for quick and thorough cleaning
- Disposable AccuBand® band blades provide optimal slice quality, consistency and yield while eliminating resharpening and simplifying clean-up

COMMON FOOD APPLICATIONS



Bacon



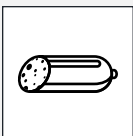
Cheese



Fresh Meats



Fresh Produce



Lunch Meats



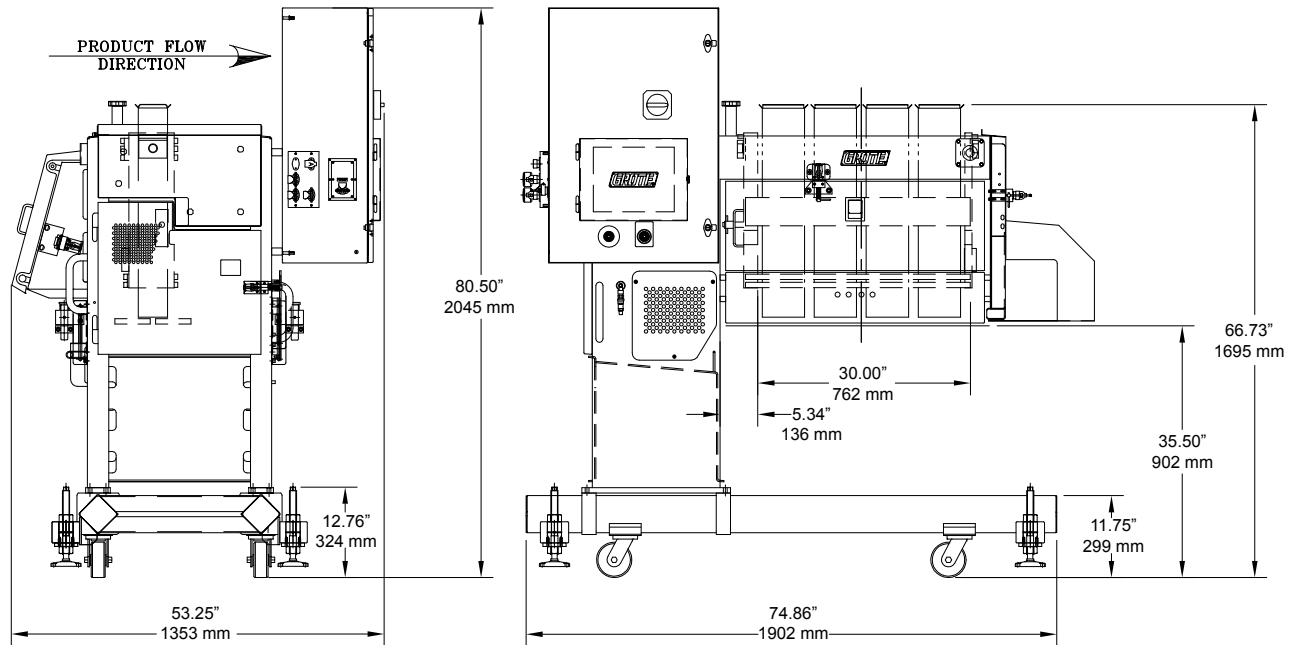
Pizza



Sandwiches



SLICER/APPLICATOR



ALL DIMENSIONS ARE APPROXIMATE
PRIMARY DIMENSIONS IN INCHES

This drawing contains confidential information is the exclusive property of the J.E. Grote Co. Neither this document, nor its contents, are to be used, reproduced or disclosed in whole or in part without the express written permission of the J.E. Grote Co. Copyright 2017, J.E. Grote Company, Inc.

SPECIFICATIONS

Product Size: up to 6" (152.4 mm) diameter

Slicing Zone: 22", 30" or 40" wide

Slice Thickness: up to .5" (12.7 mm) standard, up to 1.5" (38.1 mm) optional

Electrical: 200-575 VAC, 50/60 Hz, 3 Phase

Water: 40-100 PSI (required with some products)

FEATURES/PARTS

- AccuBand blades and blade guides
- Multiple head and lane configurations available
- Custom product holders per application
- Target and Bulk Slice modes
- Cantilevered design and left- or right-hand frame orientation
- Gravity feed

OPTIONS

- 522E, 530E and 640E models available

E 10.17v5

CONTACT US

Grote Company is proud to provide top quality equipment, exceptional service and peace of mind worldwide. Contact us for more information or to schedule a demo of the Slicer/Applicator with your product in your exact operating conditions in our Demo Facility.



To feed our growing world - Together

sales@grotecompany.com
grotecompany.com